

ESTABLISHED IN 1979

BRING THE SKY INSIDE

WITH DAYLITER SKYLIGHTS

Quality

Style

Function

Dayliter Skylights designs and manufactures quality skylights and roof access hatches which can be used for residential and commercial application.



OUR UNBEATABLE SELECTION

Offering the most
comprehensive selection
of skylights since 1979

RESIDENTIAL



VCM Glass



VCM Acrylic Dome



VCM Acrylic Pyramid



VCM Acrylic Ridgelite



VCM Insulite - A unit designed to allow those with a **flat or low pitched roof** to be able to enjoy the benefits of a glass skylight. The Insulite skylight consists of a standard Cardinal LoE 366 tempered insulated glass base with an acrylic dome installed on top of the glass. The increased air space of the acrylic dome is a very effective buffer zone against heat, cold and noise. The dome serves to repel the water from the flat surface, as well as giving the double glazed sealed unit a third layer to enhance the overall insulation and thermal efficiency of the unit.

Find your perfect skylight:
www.DAYLITER.com

Skylights provide excellent natural lighting that beautifies indoor spaces by providing warmth and brightness.

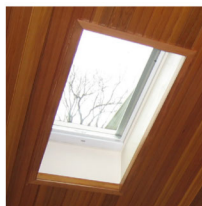
Natural lighting is healthy and energy efficient in that it can help reduce your peak electric consumption.

Dayliter produces and delivers high quality, reliable, functional, and stylish skylights and roof access hatches. We are continually improving and upgrading our materials and manufacturing methods through the use of proven technologies to develop an industry leading and unique skylight design. Our philosophy is to build the best skylight to meet the demands of the marketplace for quality, reliability and exceptional value.



Quality

Our commitment to excellence shines, allowing us to provide you with a 10-year limited warranty against leakage.



Style

All the benefits of natural light, with many options for every style and need.



Function

Ventilation, natural light, convenient roof access, or protection from rain and snow - Dayliter products are ultra-functional.

THE TOP TEN REASONS TO CHOOSE DAYLITER

Here's 10 reasons why Dayliter is your best option for skylight solutions:

1

Dayliter has supplied several hundred thousand trouble-free skylights throughout North America

3

Each skylight is built with top quality materials and handled with the utmost care

5

Acrylic units are designed with a unique safety skirt which ensures a leak-free unit

7

Creator of the unique roof access hatch which allows for convenient access to your roof top patio

9

Friendly staff are readily available to answer all of your questions

2

Over 30 years of experience in designing and manufacturing skylights

4

Our ability to produce custom sizes in glass allows us to meet each customers' unique needs

6

Home to the unique Insulite skylight that allows for a glass unit on a flat roof

8

Wide range of products to meet customers individual material requirements and price points

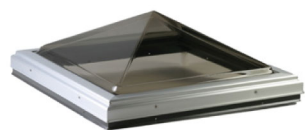
10

Our commitment to making sure your experience is excellent and the finished product exceeds your expectations

COMMERCIAL



ATCM Glass



ATCM Acrylic Pyramid

FUNCTIONAL SKYLIGHTS THAT
WORK
FOR YOUR BUSINESS

ENJOY EASY ACCESS WITH
DAYLITER
ROOF ACCESS HATCH



Dayliter Skylights unique roof access hatch is a stylish and reliable means of entrance onto roof top patios, increasing the usable space of your home and bringing more light inside.

Great for both residential and commercial application, this exclusive product is available only in glass. Dayliter recommends a roof pitch of 5/12, 7/12, or 9/12.

The vinyl curb-mounted (VCM) thermally broken roof access hatch is a factory assembled unit consisting of an extruded vinyl base with condensation gutter and weep holes; all corners are fusion-welded to ensure an effective watertight frame.

Some of the benefits of this unique product include:

- Opens to the height of a standard door (80")
- Glass Roof Hatch U-value of 2.75
- Cardinal LoE 366 Argon Gas Filled Tempered Safety Glass
- Air, Water and Wind Load Resistance
- Distributed Load Test & Corner Weld Test
- Available in Standard or Custom-Sizes
- Heavy Duty Pistons and Interior Latches

For more information
www.DAYLITER.com
1.800.268.4068



5492 275th Street
Langley, BC V4W 3X7
604.856.4530



info@dayliter.com • www.dayliter.com • 1.800.268.4068