

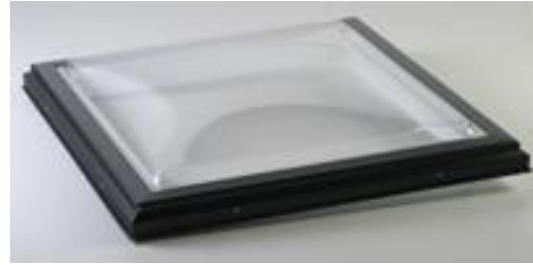
Specifications - Dayliter Model VCM
(Vinyl Curb Mounted) - Acrylic:

Curb mounted thermally broken skylights shall be Dayliter model # VCM _____ as manufactured by Dayliter Skylights in Langley, BC, Canada. The skylight shall be a factory assembled unit consisting of an extruded vinyl base frame with all corners fusion welded to ensure a watertight frame. The retaining cap shall consist of a T6063 extruded aluminum frame in (black) (brown) (white) powder coated baked enamel paint finish. The skylight shall be fastened together with stainless steel screws penetrating the side of the skylight.

Glazing materials shall be (double) (triple) (acrylic) (polycarbonate) plastic (dome) (barrel-lite) (Ridgelite) (pyramid) in (clear) (bronze) (white) with a uniform air space between the domes and a perimeter moisture flange (*no-leak guarantee*) stretch formed into the top (acrylic) (polycarbonate) layer to eliminate water penetration.

The condensation gutter with weep holes in all four corners shall be an integral part of the unit.

Standard and Custom Sizes are available.



Dayliter Dome VCM



Dayliter Ridgelite VCM

Model Number	Inside Curb Rough Opening
2028 (1 X 2)	14.5 X 22.5
2036 (1 X 3)	14.5 X 30.5
2052 (1 X 4)	14.5 X 46.5
2828 (2 X 2)	22.5 X 22.5
2836 (2 X 2.5)	22.5 X 30.5
2840 (2 X 3)	22.5 X 34.5
2852 (2 X 4)	22.5 X 46.5
2864 (2 X 5)	22.5 X 58.5
2868 (2 X 5.5)	22.5 X 62.5
2876 (2 X 6)	22.5 X 70.5
28100 (2 X 8)	22.5 X 94.5
3636 (2.5 X 2.5)	30.5 X 30.5
3652 (2.5 X 4)	30.5 X 46.5
3668 (2.5 X 5.5)	30.5 X 62.5
3676 (3 X 6)	30.5 X 70.5
36100 (2.5 X 8)	30.5 X 94.5

Model Number	Inside Curb Rough Opening
4040 (3 X 3)	34.5 X 34.5
4052 (3 X 4)	34.5 X 46.5
4076 (3 X 6)	34.5 X 70.5
4242 (3.5 X 3.5)	36.5 X 36.5
5252 (4 X 4)	46.5 X 46.5
5268 (4 X 5)	46.5 X 62.5
5276 (4 X 6)	46.5 X 70.5
52100 (4 X 8)	46.5 X 94.5
6060 (5 X 5)	54.5 X 54.5
60100 (5 X 8)	54.5 X 94.5
6476 (5 X 6)	58.5 X 70.5
64100 (5 X 8)	58.5 X 94.5
7676 (6 X 6)	70.5 X 70.5
76100 (6 X 8)	70.5 X 94.5
100100 (8 X 8)	94.5 X 94.5